

MARGERETE

Shipwreck Documentation Project

GUE PROJECT BRIEF - 2025

Some GUE Projects don't need special planning – they just happen!

This was the case of our spontaneous documentation dive on Margarete shipwreck in Poland. Over one dive we managed to make a full photogrammetry scan of the wreck. It was followed by a short documentary video which summarizes the history of a forgotten German freighter captured by the British submarine during the First World War.

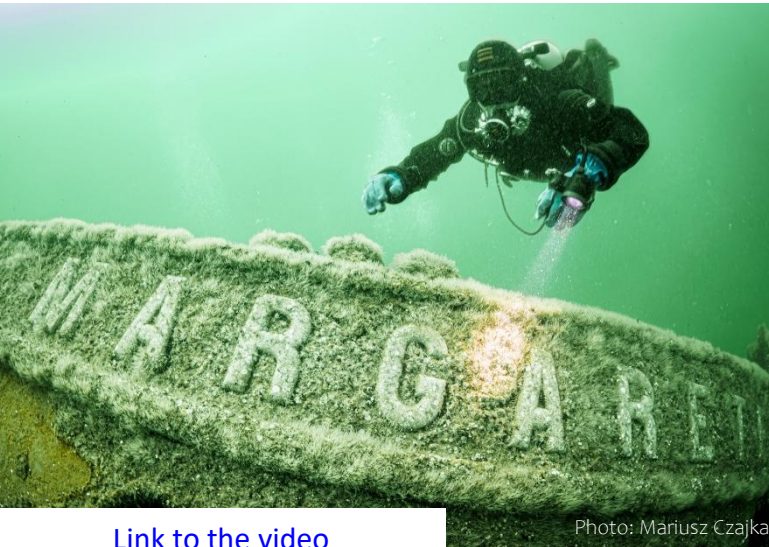
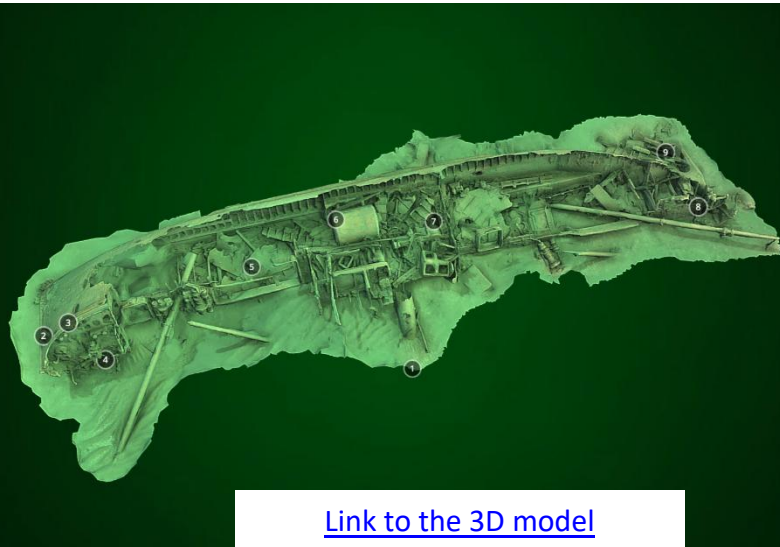


Photo: Mariusz Czajka



[Link to the 3D model](#)

[Link to the video](#)

SS Margarete was a German steamship built in 1890 at the Stettiner A.G. für Schiffs- und Maschinenbau shipyard in Stettin for the Union Gießerei Königsberg company. The vessel had a gross tonnage of 417 GRT.

On 5 October 1915, during World War I, Margarete was intercepted by the British submarine HMS E8. Following the evacuation of the crew, the ship was sunk by gunfire, reportedly using the submarine's 76 mm deck gun.

Today, the wreck rests near Łeba, Poland, at a depth of approximately 15 meters.

During a recreational diving trip in May 2025, Bartek Trzciński, Michał Ciemięga, and Maija Poikela spontaneously decided to create a photogrammetry model of the wreck. The scan produced surprisingly good results. The model was later supplemented with a short documentary video filmed by Bartek Trzciński, with substantive support from Michał Ogłóza (podwodnedziedictwo.pl).

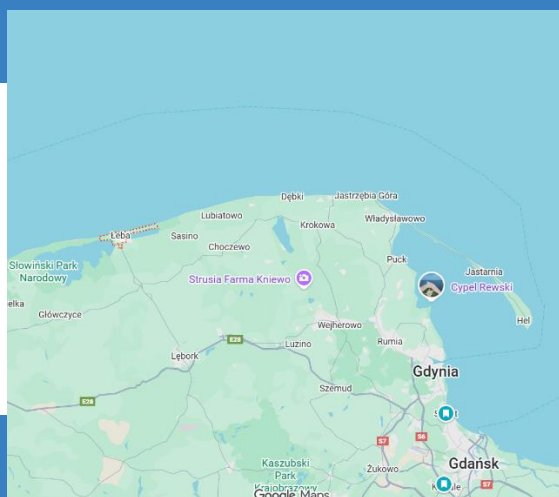
HOW TO BE PART OF THIS PROJECT

If you would like to help us documenting shipwrecks in just reach out to Bartek

SPONSORS / PARTNERS

[Dive House Baltic](#)

[Podwodne Dziedzictwo](#)



LOCATION

Łeba, Poland

CONTACT

Bartek Trzciński
bat@gue.com