

WKPP – Woodville Karst Plain Project

Turner Sink to Wakulla Springs Traverse—

December 15, 2007

The WKPP is a non-profit affiliate of Global Underwater Explorers (GUE). The mission of the WKPP is to explore, survey, connect and protect the flooded underwater cave systems of North Florida's Woodville Karst Plain. To this end, the WKPP promotes public awareness, education and scientific discovery through exploration and research support within these flooded underground cave systems. Through partnerships with state, federal and private landowners, the WKPP is uniquely positioned to facilitate scientific research and the gathering of valuable data. In turn, researchers, resource managers, policy makers and landowners can formulate necessary and responsible land use decisions to protect these unique and treasured resources for future generations.

Project Highlights

Officially Established: 1990
 17 years as an official project, 22 years total
 Total # current, volunteer team members: 75
 Total # volunteer team members since 1990: 500

Investment—ALL Volunteer

300+ scheduled diving events and 300,000+ hours since 1990
 Amount of equipment moved per event: 15,000lbs
 Longest exploration dive exposure: 26.5 hours
 Average exploration dive exposure: 15 hours
 Direct expenses per event: est. \$10,000
 Total direct expenses since 1990: est. \$3 million
 Equipment cost per exploration diver: est. \$85,000
 Equipment cost (total team): est. \$1.5 million

Turner Sink to Wakulla Springs Traverse

Water conditions permitting and barring any unforeseen logistical issues, the WKPP exploration team of Jarrod Jablonski and Casey McKinlay will enter Turner Sink on December 15 and travel approximately 7 miles downstream and underground to Wakulla Springs. The journey will take approximately 7 hours followed by 12 hours of decompression due to the extreme depths (300ft) of the cave passage-way. No exit to the surface is possible along the way.

Dive Plan Overview

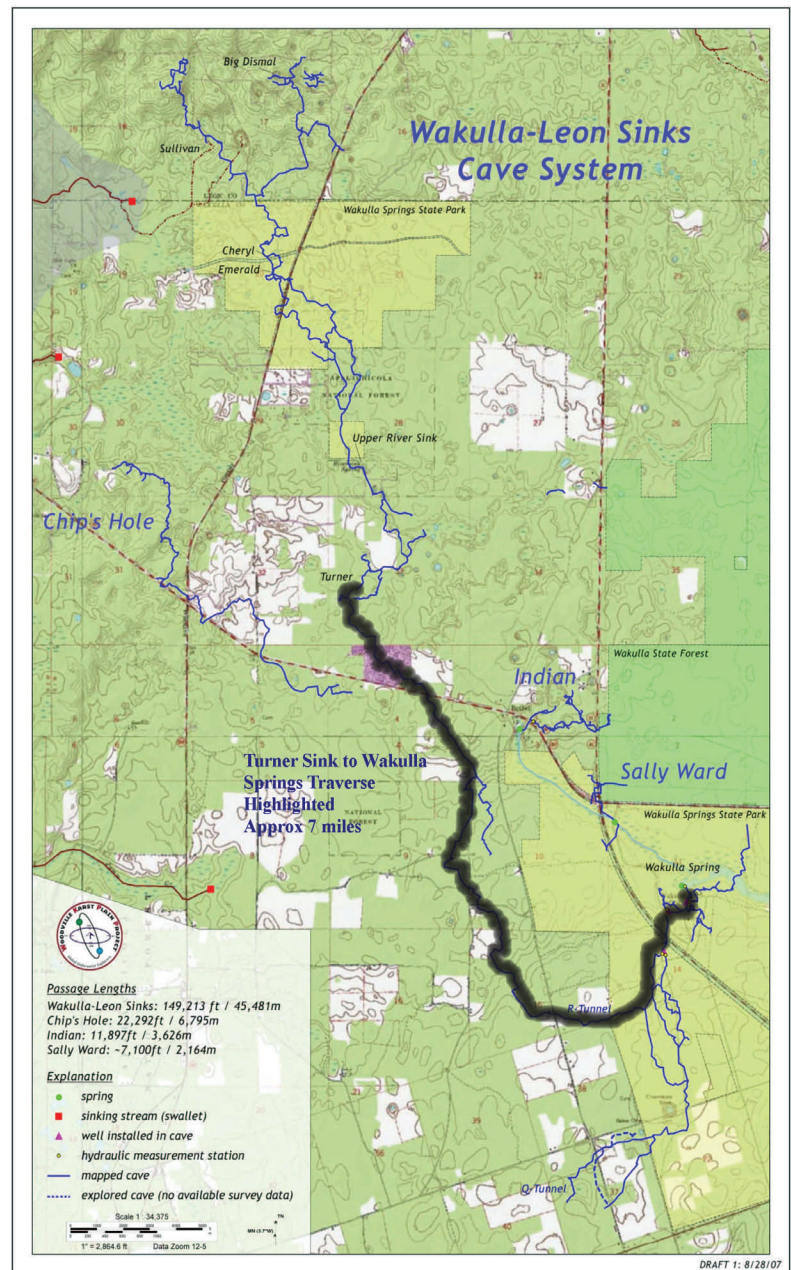
Friday, Dec. 14: Decompression setup—Support teams at Wakulla Springs & Turner Sink position decompression tanks and equipment for all dive teams.

Saturday, Dec. 15 @ 7am: Wakulla Springs setup—Dive team from Wakulla Springs will stage equipment 1 mile into Wakulla Springs for pickup by traverse team on final leg of trip—10hr dive.

Saturday, Dec. 15 @ 1pm: Traverse team will depart Turner Sink for 7 hour journey to Wakulla Springs once delivery of Wakulla equipment confirmed. Exploration along the way may be possible.

Equipment: Halcyon RB80 Rebreather—12 hour range
 DPV—5 for each diver—3 mile range each
 Tanks—5 for each diver—1.5hr range each

Plan: Depart Turner Sink at 1pm
 @7,000ft downstream switch tanks & DPV—3pm
 @13,000ft downstream switch DPV—4pm
Abort no longer possible, committed to Wakulla
 @19,000ft downstream switch tanks & DPV—5pm
 @25,000ft downstream switch tanks & DPV—6pm
 @30,000ft downstream pickup staged equipment, switch DPV and complete final 1 mile journey to Wakulla—7pm
 Arrive Wakulla Springs and begin decompression—8pm
 Surface Sunday, Dec. 16—8am



WKPP Cave Diving Records

- World Record— longest traverse between two openings into a flooded cave system—Big Dismal Sink to Cheryl Sink Traverse 1999—13,000ft
- World Record – longest penetration into a flooded cave system – 23,810 ft. Wakulla Springs, June 23, 2007
- World Record – longest penetration into a flooded cave system – 20,100 ft. Wakulla Springs, May 19, 2006
- World Record—longest penetration into a flooded cave system—19,000ft. Wakulla Springs, July, 2000.

Wakulla-Leon Sinks Cave System

Ranks #1 in the US—longest underwater cave system
 Ranks #4 in the world—longest underwater cave system
 Ranks #64 in the world—longest cave system wet or dry

More information about the WKPP can be found at:
www.gue.com
www.wkpp.org